



# Mid Term Car Park Phases 1 and 2

# Luton

Client Contact Name	Louis Cadette, Luton Borough Council
Project Location	London Luton Airport
Project Cost	£2.4M
Project Start & End Date	Start – August 2017; Completion – July 2019
Project Details	Design and build a new bus route creating more car park spaces and a safer bus access and drop-off

## Project Principals and Objectives

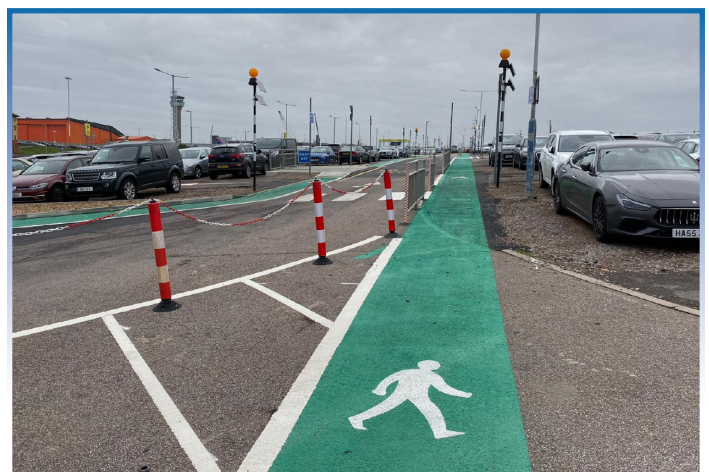
The client needed to enhance the bus route making it more accessible, introduce new stops and increase the number of parking spaces available in the mid-term car park.

In August 2017 Ryebridge was appointed to design and build a circulatory bus route to the MTCP to enable the removal of the current bus spinal lane that acted as the bus drop-off and pick-up route along with passenger vehicle access to create additional parking spaces, segregate pedestrians and interface with pick-up/drop-off buses and passenger vehicles.



## Key Quantities Involved

- ▶ 4500m<sup>2</sup> asphalt
- ▶ 2500T Type 1
- ▶ 1000m<sup>2</sup> MMA Pedestrian Walkway
- ▶ 8No new bus stops – fabricated and installed
- ▶ 16No new drop-off/pick-up islands
- ▶ 450m pedestrian visirail fencing
- ▶ 14No new lamp columns
- ▶ 650m new ducting for supplies
- ▶ 150No new signs and posts
- ▶ 2400m new kerbs





## Solution Focused Approach

Solutions were required in the design and plan as it was imperative that passengers and members of the public were still able to access the bus service and park while works undertaken. It was also a requirement that all works undertaken were compliant with road Safety Audit surveys and findings.

Ryebridge designed and built a circulatory bus route to the MTCP. This facilitated the removal of the current bus spinal lane that acted as the bus drop-off and pick-up route, while creating a car park and road around the car park. This introduced new stops making a safer and more public friendly service while meeting the commercial need of the client with additional spaces for cars. The perimeter circulatory road was formed as a new road construction suitable for regular bus traffic. The parameters were to design the road to withstand a laden bus running and turning every 6 minutes. Included within the works was the installation of new compliant bus stops and DDA compliant access and parking arrangements.

**Safety and Security of the works** – Ryebridge and its staff have many years' experience working in security sensitive environments such as airports. Segregated pedestrian routes were established and formed with dedicated belisha beacon crossing points and pedestrian railings. Traffic calming measures were also installed to help assist in reducing speed limits within the car park. The facility operated safely and without disruption for the duration of the works.

## Innovation and Best Practice

Experience and knowledge meant we identified the need for critical path service diversions and the need to phase plan the project effectively. This facilitated complete access at all times for buses and cars. Everything from deliveries to waste away was managed around the public and access.

Best practice gained from working in an airside environment where public movement is critical in terms of safety and security was employed throughout. Clear signage and walkways in place and the public experience was reviewed weekly ensuring that as the project progressed the needs of members of the public were constantly met.

## Moving Forward

The success in this project reinforces our commitment to early engagement and a close partnership with our clients. Our clients can be certain that we have their objectives at the centre of what we do. In this particular project we are extremely proud that our ability to build relationships and add value to our clients is evidenced successfully throughout.